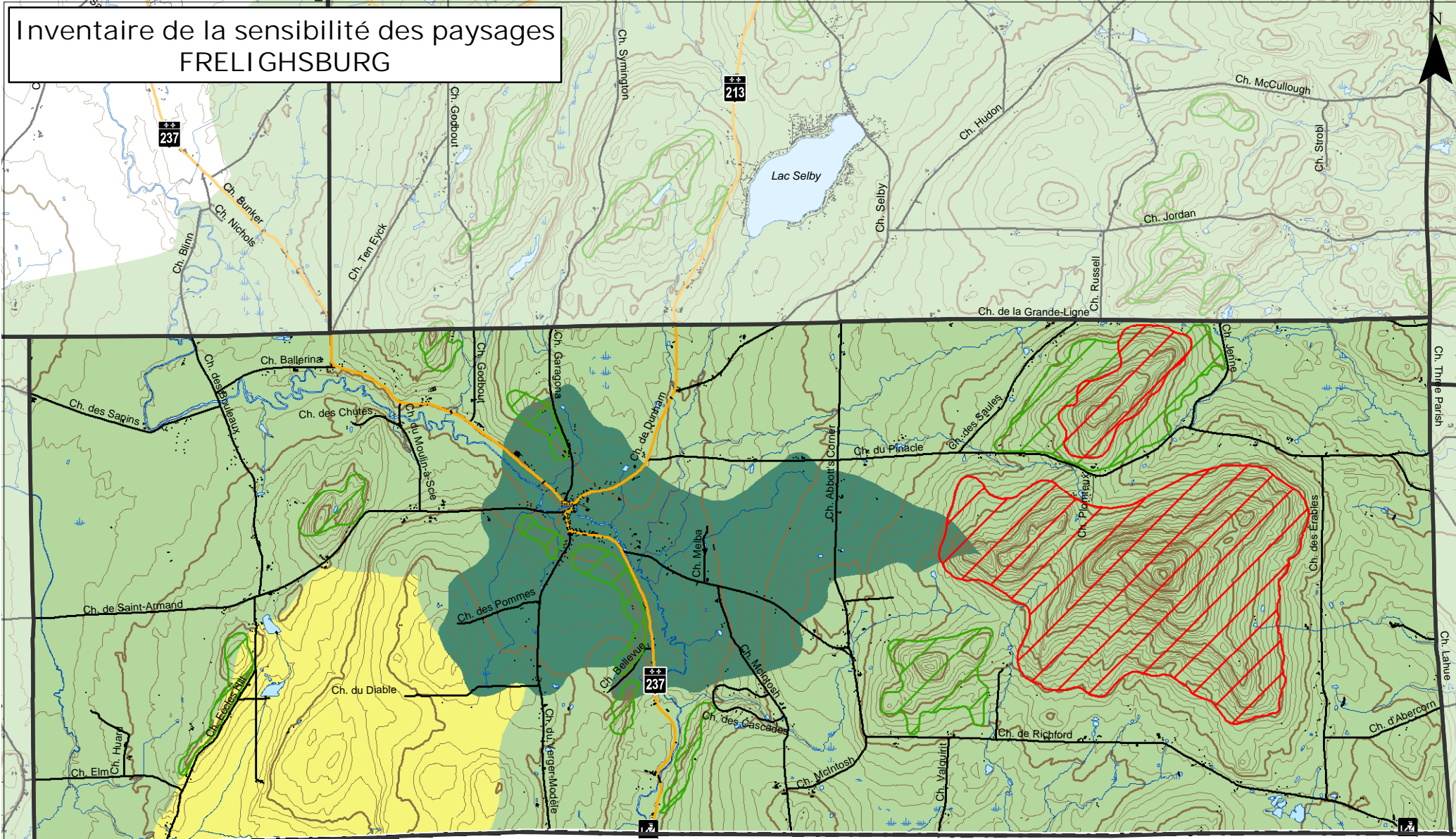

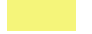






Inventaire de la sensibilité des paysages FRELI GHSBURG



Vermont (États-Unis)

SOURCE:
Photocartotheque québécoise
Ministère des Ressources Naturelles
Cartes topographiques
1:20 000, MTM 8, NAD 83, 1993
MRC Brome-Missisquoi, 2004
APP Inc.
Inventaire de la sensibilité des paysages forestier et
agro-forestier de la MRC Brome-Missisquoi, 2001

- | | | | | | |
|---|---|---|---------------------------|---|-------------------------------|
|  | Forte (intérêt international et national) |  | Faible (intérêt régional) |  | Repère topographique régional |
|  | Moyenne (intérêt provincial) |  | Territoire non analysé |  | Repère topographique local |

1:70 000

Carte 2

